

#POOLGUYS



AMERICAN POOL & SPA

AMERICAN POOL & SPA



Who We Are?

We are confidently one of the best pool companies in Central Kentucky with a reputation that precedes us.

What We Do?

Quality Vinyl Liner pool installation, Turn-Key Projects, Dedicated project manager on every job, which equals better communication and quality.

Our Process:

Your vision – Pool contract agreement – Pre-plan – Proper permits – Installation of pool – Clean up – Swim & Relax



VINYL LINER POOL BUILD PROCESS:



Pool Layout

1. Call 811 (Before you dig)
2. Permits are required and you need to check w/ your local codes office.
3. Pool Layout w/ our team.
4. Homeowner's sign off the final pool location.
5. WORK STARTS!! If there's no rain... 🌞



Pool hole dug and walls up

1. DON'T FREAK OUT!! YOU hired us to tear your yard up...its construction!!
2. Pool hole dug and crazy to see how much dirt there will be. (find a place for the dirt.)
3. Walls installed and concrete footer.
4. Plumbing installation.



1. Backfill with rock around pool.
2. This pool has travertine pool coping.
3. Concrete Footer is poured around the pool.
4. Concrete framing complete
5. Electrical "Bonding" inspection.






Backfill and concrete framing complete.



1. Concrete has been poured.
2. Pool equipment install.
3. Vinyl Liner installation.
4. Clean-Up
5. Start swimming!!

Job is completed and you are swimming.

WHAT'S INCLUDED IN POOL INSTALLATION:

Standard Pool Equipment Pad		
Pump: Pentair intelliflo3 VSF w/I/O Board 1.5hp 115/208-230V PUR-10-3106		
Filter: Pentair Sand Filter w/2" MPV SD80 26" TM Sand Dollar PAC-05-305		
Lights: Pentair Color Microbrite LED Light 12V 150cord 1.5MTP AMP-30-1311		
Transformer: 300W PX300 INT-30-745		
Breaker: Siemens 2-Pole 20A QF220 GFCI Circuit Breaker PEX-851-0220		

BEST VINYL LINER POOL PACKAGES

RECTANGLE W/ STEPS ACROSS POOL



RECTANGLE W/ TANNING LEDGE ACROSS POOL



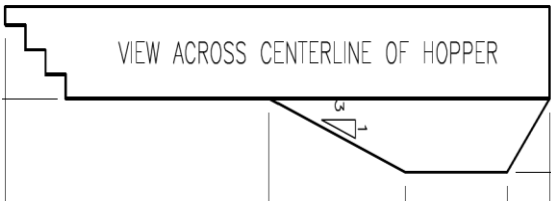
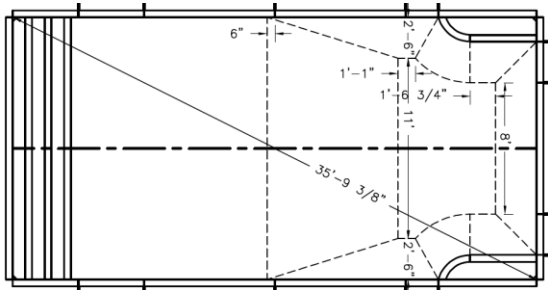
ZAM CORROSION RESISTANT STEEL

What is ZAM? Cardinal is proud to offer ZAM® 115– the most effective non-corrosive coating for steel panels in the industry. ZAM® is a hot-dip coated steel sheet that has a layer of Zinc, 6% Aluminum, and 2% Magnesium. The effects of magnesium and aluminum together allow our ZAM® coated steel panels to have excellent corrosion resistance, scratch resistance, and formability.

How does it work? Al and Mg in the coating layer of ZAM® combine to form a fine, tightly adhered zinc-based protective film on its surface as time passes. This protective film suppresses corrosion of the ZAM® coating.

Why is it important? ZAM® offers superior protection against corrosion on Salt Generator Pools, up to 5x's more effective than standard galvanization. It also offers increased protection when servicing areas with a high water table or acidic ground conditions. Customization of walls is still achievable, as sheet steel can be bent without the coating cracking on the edges. Cardinal ZAM® coated steel is covered by a lifetime, 1-time transferable warranty.

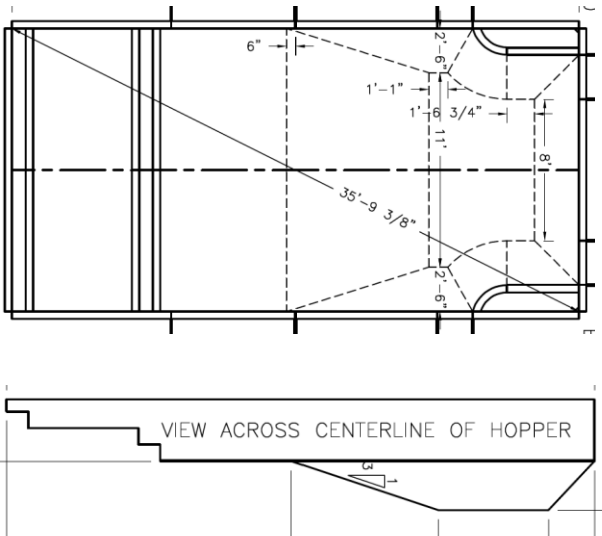
RECTANGLE W/ STEPS ACROSS POOL



- Vinyl covered steps across width of pool.
- Liner has a textured pattern for non-slip resistant.
- Benches on both sides of the pool in deep-end of pool.
- Benches also have non-slip resistant liner texture.
- Easy to get in and out of pool.
- You can Enjoy the entire pool with seating on both ends of the pool.

Item	Detail	Rectangle full step width 14' x 28'	Rectangle full step width 16' x 32'	Rectangle full step width 18' x 36'	Rectangle full step width 20' x 40'
Pool Install	Vinyl Lienr	\$53,170	\$60,815	\$67,427	\$74,740
Electrical		\$6,500	\$6,500	\$6,500	\$6,500
Concrete	850sqft	\$12,325	\$12,325	\$12,325	\$12,325
Total: Pool - Electrical - Concrete		\$71,995	\$79,640	\$86,252	\$93,565
Electrical		\$6,500	\$6,500	\$6,500	\$6,500
Concrete	850sqft	\$12,323	\$12,323	\$12,323	\$12,323
Dirt Removal	Ballpark	\$4,000 - \$6,500	\$4,000 - \$6,500	\$4,000 - \$6,500	\$4,000 - \$6,500
Heater		\$6,200	\$6,850	\$6,850	\$7,280
Total: Pool - Electrical - Dirt - Heater		\$82,195	\$91,490	\$98,602	\$107,345

RECTANGLE W/ TANNING LEDGE ACROSS POOL



- Vinyl covered tanning ledge across width of pool. All ages can enjoy a tanning ledge.
- With a Tanning ledge all ages can enjoy it!
- Liner has a textured pattern for non-slip resistant.
- Benches on both sides of the pool in deep-end of pool.
- Benches also have non-slip resistant liner texture.
- Easy to get in and out of pool.
- You can Enjoy the entire pool with seating on both ends of the pool.

Item	Detail	Rectangle full Tanning Ledge 14' x 28'	Rectangle full Tanning Ledge 16' x 32'	Rectangle full Tanning Ledge 18' x 36'	Rectangle full Tanning Ledge 20' x 40'
Pool Install	Vinyl Lienr	\$55,836	\$62,962	\$69,718	\$77,296
Electrical		\$6,500	\$6,500	\$6,500	\$6,500
Concrete	850sqft	\$12,325	\$12,325	\$12,325	\$12,325
Total: Pool - Electrical - Concrete		\$74,661	\$81,787	\$88,543	\$96,121
Electrical		\$6,500	\$6,500	\$6,500	\$6,500
Concrete	850sqft	\$12,323	\$12,323	\$12,323	\$12,323
Dirt Removal	Ballpark	\$4,000 - \$6,500	\$4,000 - \$6,500	\$4,000 - \$6,500	\$4,000 - \$6,500
Heater		\$6,200	\$6,850	\$6,850	\$7,280
Total: Pool - Electrical - Dirt - Heater		\$85,861	\$93,567	\$100,893	\$109,901

ACCESSORIES OPTIONS: *(Additional Cost to All Pool Quotes)*

SALT SYSTEM:

\$3,500 to \$4,600 []



HEATER: Heat Pump *(Recommended Long Term Savings)*

\$6,520 to \$8,500 []

HEATER: Propane

\$6,200 to \$7,800 []

HEATER: Natural Gas

\$6,200 to \$7,800 []



AUTOMATIC POOL CLEANER:

\$1,200 to \$2,400 []

DECK JETS: Individual per deck jet

\$950 []



LAMINAR DECK JETS: Individual per laminar

\$2,890 []



ACCESSORIES OPTIONS: (Additional Cost to All Pool Quotes)

BUBBLER w/LED LIGHTS: cost for a pair of (2)

\$3,760 (2)

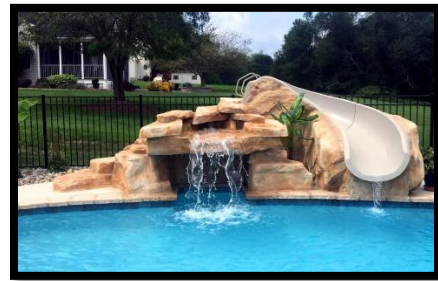


WATER FEATURES:

- Rico Rock Waterfalls
- Grottos
- Waterfalls & Slides

Several Options

\$7,500- \$30,000



DIVING BOARD:

\$2,200 to \$6,800

POOLSIDE VOLLEYBALL SET:

\$1,457

BASKETBALL DECK SUPPORT KIT & BRONZE ANCHOR KIT:

\$2,034

Ledge Loungers: Tanning Ledge Chaise chairs

\$1,998 for 2



COVER OPTIONS: (Additional Cost to All Pool Quotes)

WINTER COVER:

\$4,500 to \$7,800



AUTO-COVER: Best safety feature on a pool

\$18,750 to \$24,347



SLIDE OPTIONS: (Additional Cost to All Pool Quotes)

SLIDE: TYPHOON CURVE "LEFT" or "RIGHT" ??:
(Two different color options: Grey & Tan)

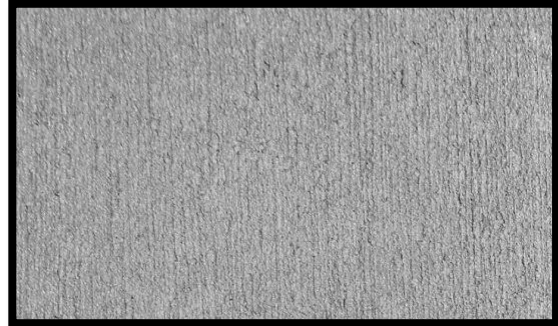
\$6,4902



CONCRETE OPTIONS

BRUSHED CONCRETE:

\$13.50 to **\$15.50**/square foot



COOL FINISH CONCRETE:

\$18.50 to **\$25**/square foot



COPING OPTIONS: (There are Three (3) Coping Options)

CATILEVER COPING

Standard
w/ a broom finish
Cost = **\$3,000 to \$7,500**

BOARDER CANTILEVER

Approx. 12" to 16" two tone
w/boarder Cantilever Stamp
Cost = **\$7,500 to \$11,800**

TRAVERTINE COPING

All types of options
Additional Cost = N/A
Cost = **\$8,000 to \$14,000**



CONCRETE: Concrete drains are not included in this quote

Depends on Project layout & design

**Note: (Disclaimer) All concrete flat work / decking around pools are an approximate square footage price. Factors that are subject to change are as follows: Square footage of pool concrete flat work / decking around pool; the need for drains; accessibility might need "Pump Truck" to pump concrete due to weather, location, tight areas b/w homes, large square footage concrete decking, ect.*